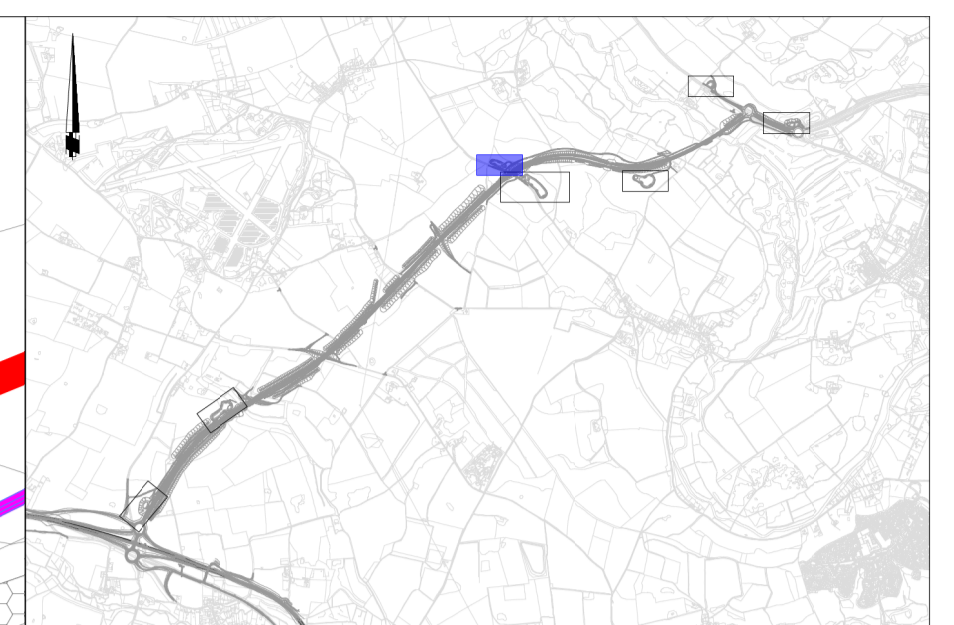
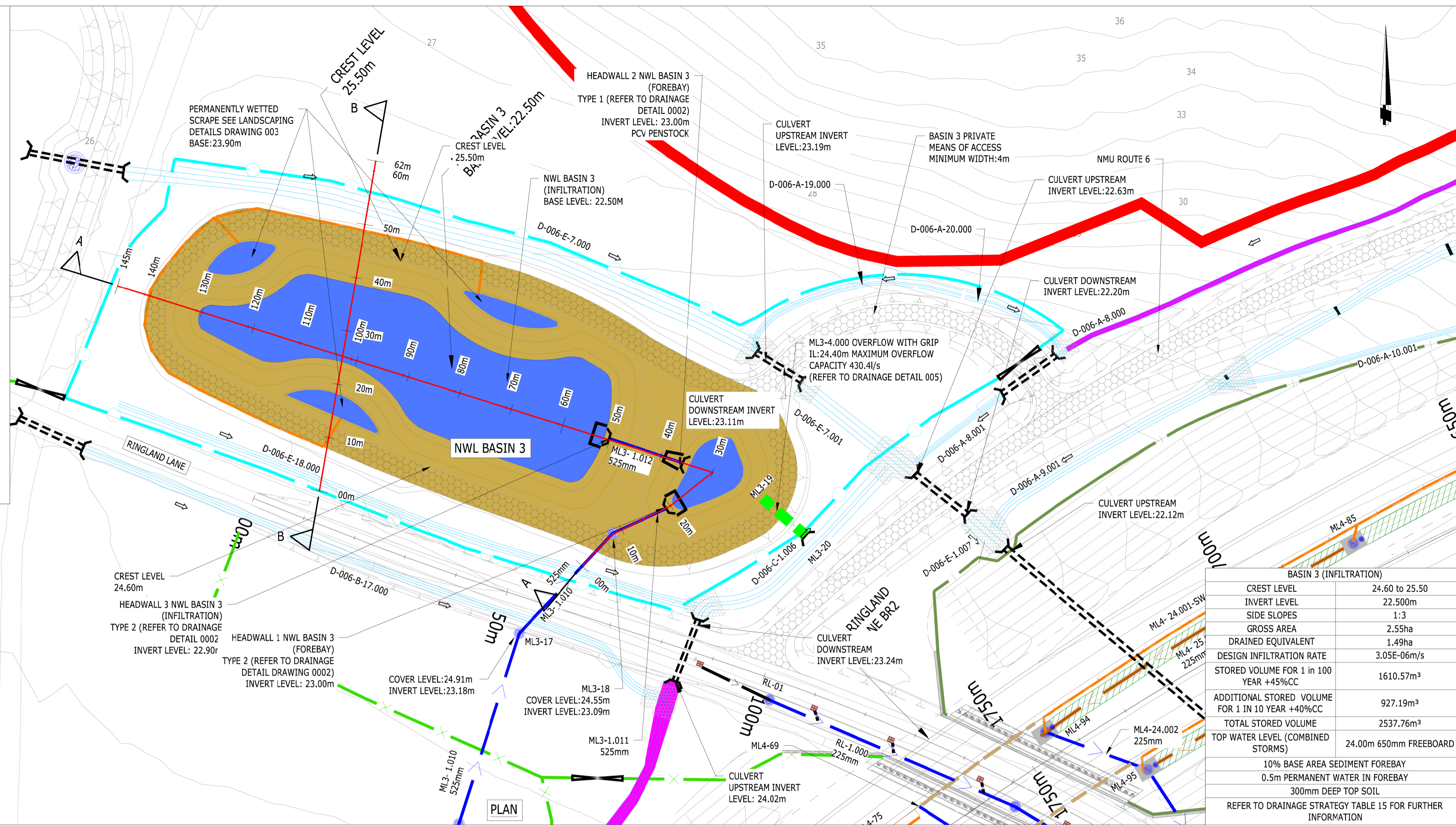


Key:

- Viaduct Carrier Drain
- Grassed Swale (Lined)
- Viaduct Abutment Drainage
- Existing Drainage To Be Retained
- Connection to A47 Drainage
- Proposed Pre Earthworks Ditch (PED)
- Highways Ditch
- Existing Ditch
- Lined Ditch/Swale
- Fence Type 1
- Fence Type 2
- Basin Maintenance Access Track, Minimum 4m Width
- Fence Gate
- Proposed Culvert/Piped Ditch
- Badger Culvert
- Inlet/Outlet Headwall (Type 2 Unless Otherwise Stated)
- Check Dam in Ditch
- Flood Compensation Area
- Flood Zone 3A
- Surface Water Flooding (1 in 100 Year)
- Vegetated MSE Bagwork
- PCV
- Pollution Control Valve
- C-0X-Y-Z.000
- C - Culvert/Piped Ditch
- X - Outfall Number (1-15)
- Y - Size (A - 0.3m, B - 0.45m, C - 0.75m, D - 0.9m)
- Z - Culvert Reference
- D-0X-Y-Z.000
- D - Ditch Type (D - Pre-Earthworks, H - Highways)
- X - Outfall Number (1-15)
- Y - Ditch Size (A - 0.3m, B - 0.45m, C - 0.6m D - 0.75m, E - 1.0m)
- Z - Ditch Reference

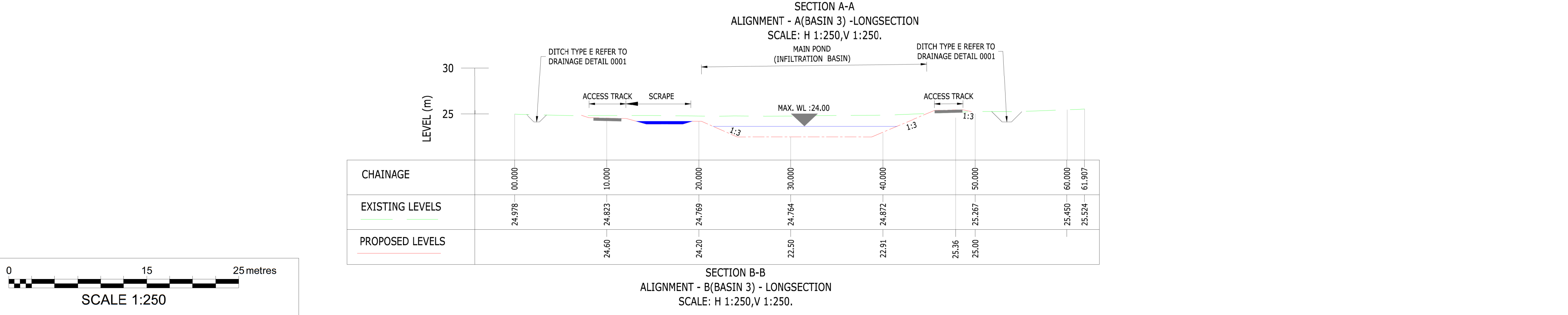
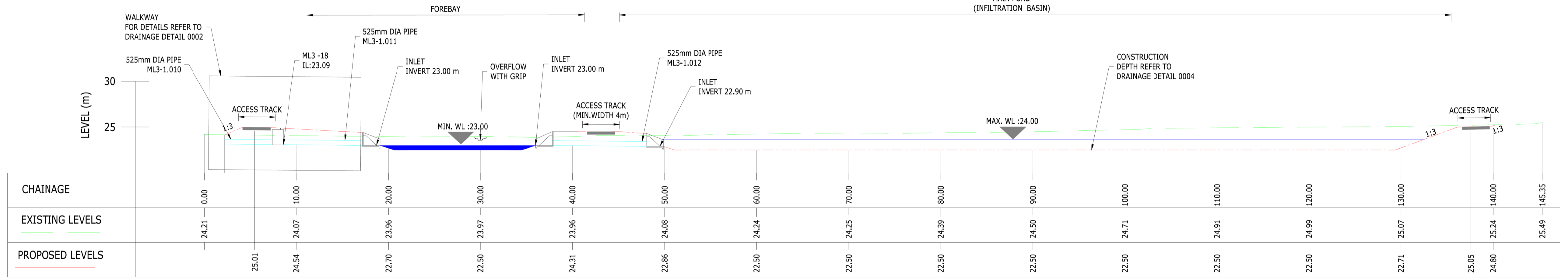
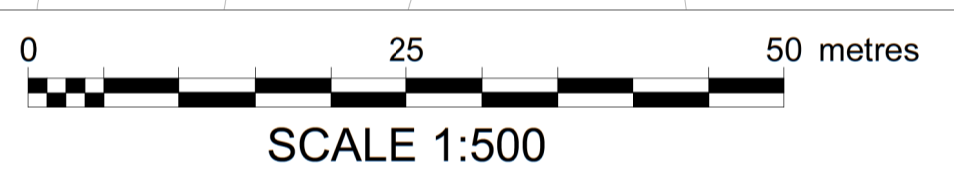


- Notes:**
- Do not scale from this drawing.
 - All dimensions are in metres unless otherwise stated.
 - This drawing is to be read with all other relevant drawings and reports.
 - All works to be in accordance with the Specification for Highway Works.
 - These drawings supplement 4.04.00 PK1002-RAM-HDG-MLE-SG-DZ-0001 Drainage Strategy Report.
 - For planting and amenity arrangements, refer to 2.07.00 Landscaping Design Plans NCC1793-RAM-ELS-MLE-DR-NZ-0001 to 0010
 - For drainage details, refer to 2.08.04 Drainage Typical Details PK1002-RAM-HDG-MLE-DE-DZ-0001 to 0006. For pipe gradients, manhole details refer to DS Appendices.
 - Please refer to 3.03.00 Environmental Statement Chapter 3: Description of Scheme for the Rochdale Envelope flexibility included within the design for the purposes of Environmental Impact Assessment.
 - For fencing details, refer to 2.03.00 General Arrangement Plans. PK1002-RAM-HGN-MLE-DR-CH-0002 to 0006
 - This drawing is for planning application purposes only, it is not a construction issue drawing.

Key:

- Red Line Boundary
- Proposed Drainage Basin
- Existing Watercourse
- Retaining Wall
- Surface Water Manhole (HCD F3-F6)
- Catchpit (HCD F11)
- Proposed Gully (HCD F13)
- Inline Outlet to Triangular Surface Water Channel (HCD F22) (1/2/3 Chambers Depending on Requirements)
- Inline Outlet to Trapezoidal Surface Water Channel (HCD F23) (2/3 Chambers Depending on Requirements)
- Catchpit (HCD F12)
- FC
- OU
- AP
- Proposed Combined Kerb Drainage Outlet/Access Point
- Existing Manhole To Be Retained
- Surface Water Carrier Drain
- Proposed Combined Filter/Carrier Drain (HCD F2 Type H)
- Combined Kerb Drainage (HCD B16 Type 25A Class E600)
- Proposed 100mm dia narrow filter drain (HCD F18)
- Proposed Gully Lead
- Concrete Surface Water Channel (HCD B14, type A)
- Grip Overflow

BASIN 3 (INFILTRATION)	
CREST LEVEL	24.60 to 25.50
INVERT LEVEL	22.500m
SIDE SLOPES	1:3
GROSS AREA	2.55ha
DRAINED EQUIVALENT	1.49ha
DESIGN INFILTRATION RATE	3.05E-06m/s
STORED VOLUME FOR 1 IN 100 YEAR +45%CC	1610.57m³
ADDITIONAL STORED VOLUME FOR 1 IN 10 YEAR +40%CC	927.19m³
TOTAL STORED VOLUME	2537.76m³
TOP WATER LEVEL (COMBINED STORMS)	24.00m 650mm FREEBOARD
10% BASE AREA SEDIMENT FOREBAY 0.5m PERMANENT WATER IN FOREBAY 300mm DEEP TOP SOIL REFER TO DRAINAGE STRATEGY TABLE 15 FOR FURTHER INFORMATION	



Mapping reproduced by permission of Ordnance Survey on behalf of HMSO.
© Crown copyright and database rights 2024 Ordnance Survey 100019340.

A1 - Authorised for Planning

REVISION	DRAWN	CHECKED	APPROVED	DATE
C01	AJ	KJ	SS	08/02/24

Norfolk County Council
 Grahame Bygrave
 Interim Executive Director of
 Community and Environmental Services
 Norfolk County Council
 County Hall, Martineau Lane
 Norwich NR1 2SG

PROJECT

DRAWING TITLE
 NORWICH WESTERN LINK
 BASIN LAYOUT
 SHEET 4 OF 7

DRAWING STATUS
 A1 - AUTHORISED FOR PLANNING

DRAWN	CHECKED	APPROVED	AUTHORISED
AJ	KJ	SS	FQC

SCALE @ A1 SIZE: AS SHOWN | DATE: 08/02/24 | REVISION: C01

DRAWING NUMBER
 PK1002-RAM-HDG-MLE-DR-DZ-0544